

**FULLER BOAT HOUSE AND SINGLES SHED**  
 EXPAND OR REBUILD FULLER BOATHOUSE IN HILLSIDE TO ACCOMMODATE INCREASED STORAGE AND PROGRAMMATIC NEEDS WHILE PROVIDING MORE RIVERFRONT SPACE. INCORPORATE STORAGE FROM SINGLES SHED. NEW STRUCTURE TO ALLOW FOR INCREASED TURNING RADIUS FOR TRAILERS AND BUSES.

REVISE TRAIL LOCATION BASED ON LOCATION OF NEW BUILDING

EXPAND UNDERGROUND COMMUNICATIONS SERVICE FROM MAIN CAMPUS

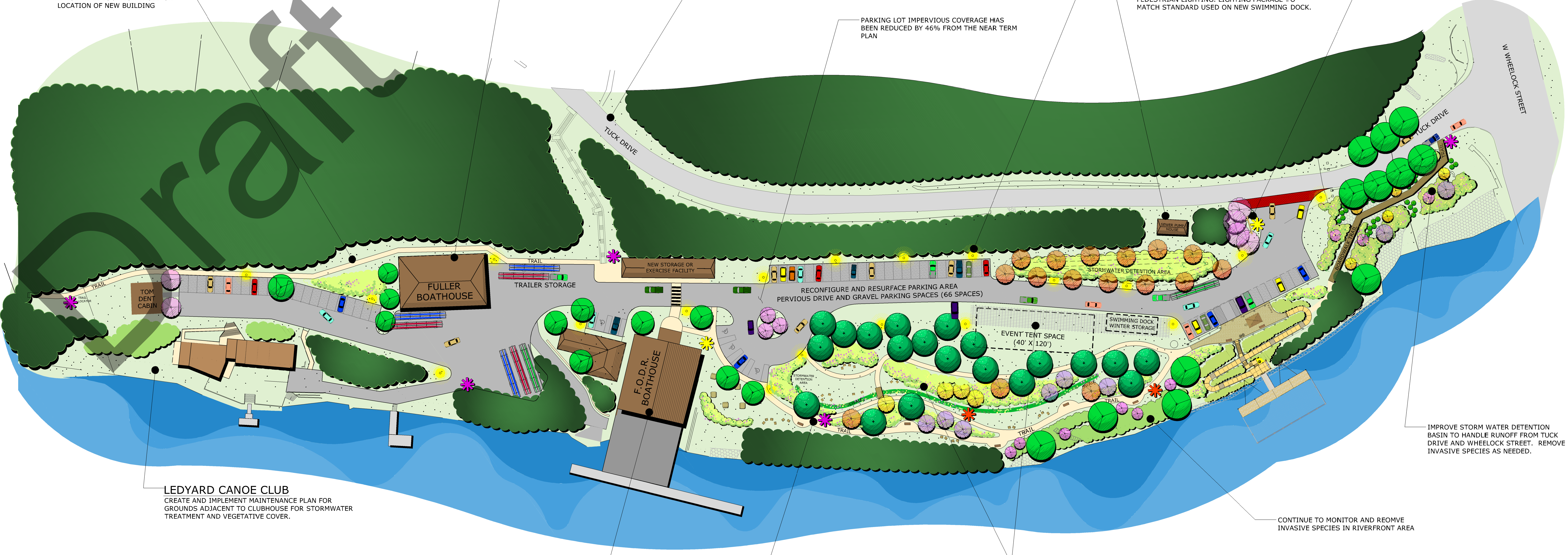
- INTERNET
- PHONE
- FIRE WARNING

**UTILITIES**

- CONSTRUCT BRICK AND GRANITE HOUSE FOR SEWER PUMP AND ELECTRONICS
- PUT ALL UTILITIES UNDERGROUND WITHIN THE RIVERFRONT
- PROVIDE ADDITIONAL LIGHTING THROUGHOUT SITE TO INCLUDE FULL CUT-OFF VEHICULAR AND PEDESTRIAN LIGHTING. LIGHTING PACKAGE TO MATCH STANDARD USED ON NEW SWIMMING DOCK.

CREATE A CLEAR WEST CAMPUS ARRIVAL SEQUENCE AND LINK TO RIVERFRONT WAYFINDING SIGNAGE

PARKING LOT IMPERVIOUS COVERAGE HAS BEEN REDUCED BY 46% FROM THE NEAR TERM PLAN



**LEDYARD CANOE CLUB**  
 CREATE AND IMPLEMENT MAINTENANCE PLAN FOR GROUNDS ADJACENT TO CLUBHOUSE FOR STORMWATER TREATMENT AND VEGETATIVE COVER.

**F.O.D.R. BOAT HOUSE**

- EXPAND OR REBUILD BOATHOUSE TO ACCOMMODATE INCREASED STORAGE NEEDS AND IMPROVED PROGRAMMING. EXPANSION TO POSSIBLY INCLUDE NEW STORAGE OR EXERCISE FACILITY.
- MOVE GAS STORAGE AND PUMP AWAY FROM RIVER.

RE-VEGETATE RECLAIMED PARKING LOT TO EXPAND STORMWATER TREATMENT, CREATE RIPARIAN HABITAT, AND PROVIDE GATHERING SPACES IN NATURAL RIVERFRONT SETTING

**STORMWATER MANAGEMENT AREA**

- EXPAND STORMWATER TREATMENT IN RECLAIMED PARKING LOT BY INSTALLING ADDITIONAL DETENTION BASINS AND SWALES.
- INSTALL UNDERGROUND RECHARGE GALLERIES IN LAWN AREA THAT WILL BE PERIODICALLY USED FOR CREW TRAILER PARKING AND SNOW STOCKPILE AREA
- CREATE AND IMPLEMENT STORMWATER MAINTENANCE PLAN FOR RIVERFRONT.

CONTINUE TO MONITOR AND REMOVE INVASIVE SPECIES IN RIVERFRONT AREA

IMPROVE STORM WATER DETENTION BASIN TO HANDLE RUNOFF FROM TUCK DRIVE AND WHEELOCK STREET. REMOVE INVASIVE SPECIES AS NEEDED.

**CONCEPTUAL MASTER PLAN - LONG TERM (5-10 YEARS)**

**DARTMOUTH COLLEGE RIVERFRONT ON THE CONNECTICUT RIVER**

HANOVER, NEW HAMPSHIRE

OCTOBER 2012

**RIVERFRONT MASTER PLAN OBJECTIVES**

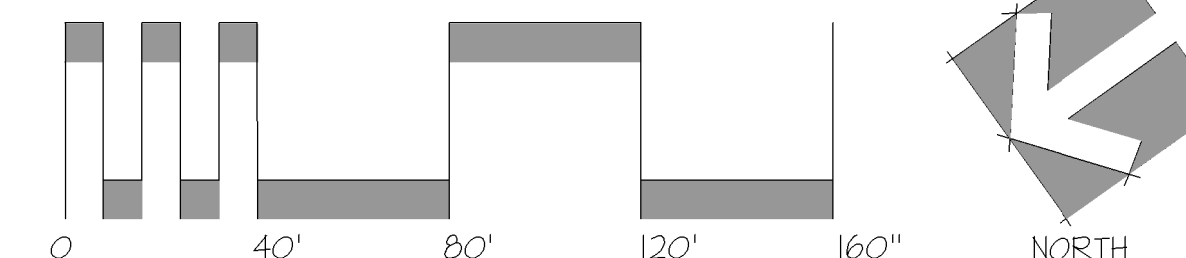
1. NATURALIZE RIVERFRONT AREA FOR ENHANCED ENVIRONMENTAL QUALITY AND AESTHETICS
2. IMPROVE RIVERFRONT RECREATION AND ATHLETIC USES
3. TREAT STORMWATER RUNOFF TO CAPTURE OVERLAND FLOW AND LIMIT DIRECT DISCHARGE
4. UPGRADE STRUCTURES TO IMPROVE CURRENT PROGRAMMING
5. UPDATE UTILITIES FOR IMPROVED SAFETY AND SERVICE

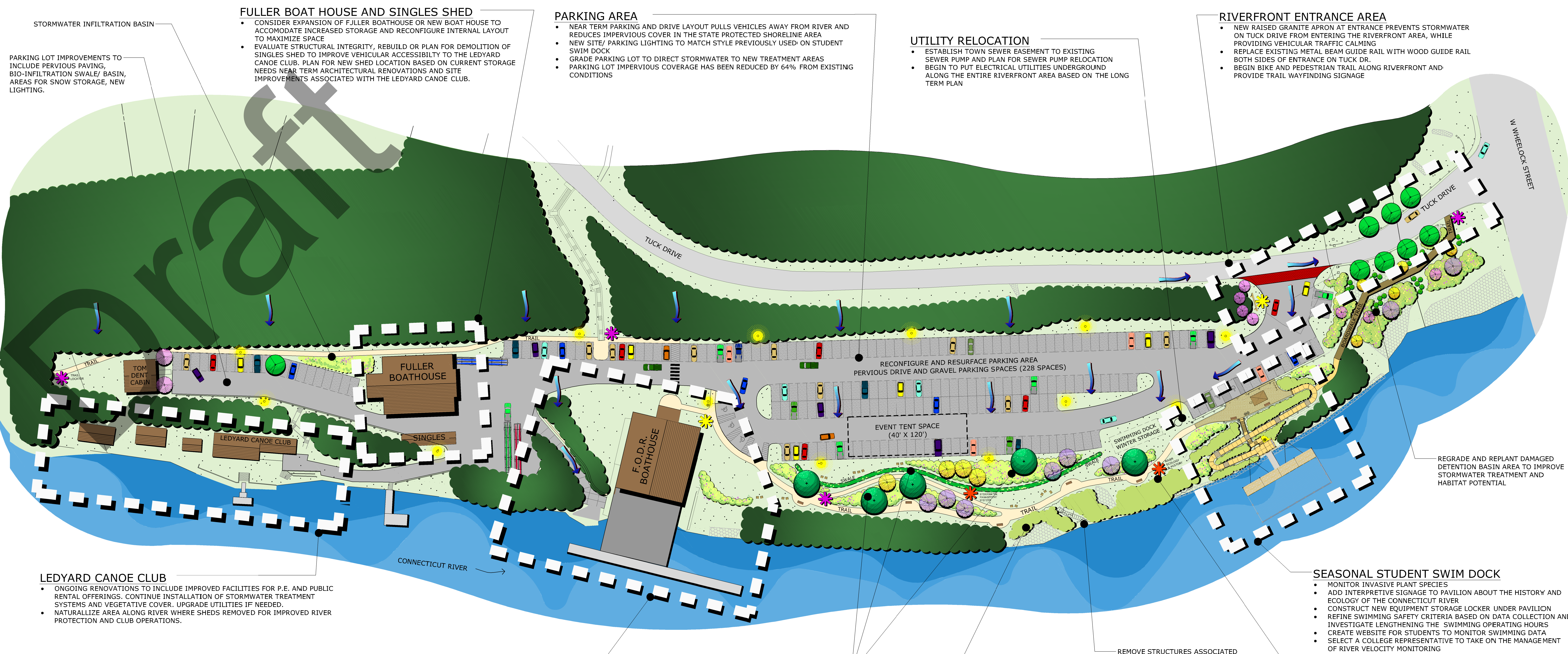
**LEGEND**

- ☀ INTERPRETIVE SIGNAGE
- ☀ GATEWAY SIGNAGE
- ☀ WAYFINDING SIGNAGE
- ☀ SITE LIGHTING
- ☀ SITE FURNISHINGS (PICNIC TABLE, BENCH, & ADIRONDACK CHAIRS)



1 South Main Street, 2nd Floor  
 Waterbury, Vermont 05676  
 (802) 882-8335 Fax (802) 882-8346  
 www.miloneandmacbroom.com





**FULLER BOAT HOUSE AND SINGLES SHED**

- CONSIDER EXPANSION OF FULLER BOATHOUSE OR NEW BOAT HOUSE TO ACCOMMODATE INCREASED STORAGE AND RECONFIGURE INTERNAL LAYOUT TO MAXIMIZE SPACE
- EVALUATE STRUCTURAL INTEGRITY, REBUILD OR PLAN FOR DEMOLITION OF SINGLES SHED TO IMPROVE VEHICULAR ACCESSIBILITY TO THE LEDYARD CANOE CLUB. PLAN FOR NEW SHED LOCATION BASED ON CURRENT STORAGE NEEDS NEAR TERM ARCHITECTURAL RENOVATIONS AND SITE IMPROVEMENTS ASSOCIATED WITH THE LEDYARD CANOE CLUB.

**PARKING AREA**

- NEAR TERM PARKING AND DRIVE LAYOUT PULLS VEHICLES AWAY FROM RIVER AND REDUCES IMPERVIOUS COVER IN THE STATE PROTECTED SHORELINE AREA
- NEW SITE/ PARKING LIGHTING TO MATCH STYLE PREVIOUSLY USED ON STUDENT SWIM DOCK
- GRADE PARKING LOT TO DIRECT STORMWATER TO NEW TREATMENT AREAS
- PARKING LOT IMPERVIOUS COVERAGE HAS BEEN REDUCED BY 64% FROM EXISTING CONDITIONS

**UTILITY RELOCATION**

- ESTABLISH TOWN SEWER EASEMENT TO EXISTING SEWER PUMP AND PLAN FOR SEWER PUMP RELOCATION
- BEGIN TO PUT ELECTRICAL UTILITIES UNDERGROUND ALONG THE ENTIRE RIVERFRONT AREA BASED ON THE LONG TERM PLAN

**RIVERFRONT ENTRANCE AREA**

- NEW RAISED GRANITE APRON AT ENTRANCE PREVENTS STORMWATER ON TUCK DRIVE FROM ENTERING THE RIVERFRONT AREA, WHILE PROVIDING VEHICULAR TRAFFIC CALMING
- REPLACE EXISTING METAL BEAM GUIDE RAIL WITH WOOD GUIDE RAIL BOTH SIDES OF ENTRANCE ON TUCK DR.
- BEGIN BIKE AND PEDESTRIAN TRAIL ALONG RIVERFRONT AND PROVIDE TRAIL WAYFINDING SIGNAGE

PARKING LOT IMPROVEMENTS TO INCLUDE PERVIOUS PAVING, BIO-INFILTRATION SWALE/ BASIN, AREAS FOR SNOW STORAGE, NEW LIGHTING.

**LEDYARD CANOE CLUB**

- ONGOING RENOVATIONS TO INCLUDE IMPROVED FACILITIES FOR P.E. AND PUBLIC RENTAL OFFERINGS. CONTINUE INSTALLATION OF STORMWATER TREATMENT SYSTEMS AND VEGETATIVE COVER. UPGRADE UTILITIES IF NEEDED.
- NATURALIZE AREA ALONG RIVER WHERE SHEDS REMOVED FOR IMPROVED RIVER PROTECTION AND CLUB OPERATIONS.

**F.O.D.R. BOAT HOUSE**

- REMOVE GRAVEL DEPOSITED AT CREW DOCK AREA AND REDUCE RUNOFF AND EROSION BY RECONFIGURING ACCESS RAMPS
- IMPROVE OR EXPAND LAYOUT OF DOCKS TO ACCOMMODATE INCREASES IN FLEET OF COACHING LAUNCHES
- IMPROVE SAFETY AND PROMOTE ADA ACCESSIBILITY TO CREW DOCKS WITH NEW ACCESS AREA
- PROVIDE INTERIOR UPGRADES TO BOATHOUSE TO IMPROVE PROGRAMMING
- IMPROVE BOATHOUSE ENTRANCE AND ARRIVAL AREA

**STORMWATER MANAGEMENT AREA**

INFILTRATION SWALES AND BASINS TREAT PARKING LOT RUN-OFF AND PROVIDE AREAS FOR SNOW STORAGE

**SEASONAL STUDENT SWIM DOCK**

- MONITOR INVASIVE PLANT SPECIES
- ADD INTERPRETIVE SIGNAGE TO PAVILION ABOUT THE HISTORY AND ECOLOGY OF THE CONNECTICUT RIVER
- CONSTRUCT NEW EQUIPMENT STORAGE LOCKER UNDER PAVILION
- REFINE SWIMMING SAFETY CRITERIA BASED ON DATA COLLECTION AND INVESTIGATE LENGTHENING THE SWIMMING OPERATING HOURS
- CREATE WEBSITE FOR STUDENTS TO MONITOR SWIMMING DATA
- SELECT A COLLEGE REPRESENTATIVE TO TAKE ON THE MANAGEMENT OF RIVER VELOCITY MONITORING
- MAINTAIN EXISTING STORMWATER DETENTION BASINS AND SWALE

**INVASIVE SPECIES REMOVAL AND BANK REVEGETATION**

PERFORM INVASIVE PLANT REMOVAL ALONG THE RIVERBANK AND REPLACE WITH NATIVE PLANT SPECIES

CREATE SEVERAL INTERPRETIVE SIGNS ALONG TRAILS TO EDUCATE USERS ABOUT STORMWATER TREATMENT AND THE CONNECTICUT RIVER

**CONCEPTUAL MASTER PLAN - NEAR TERM (0-5 YEARS)**

**DARTMOUTH COLLEGE RIVERFRONT ON THE CONNECTICUT RIVER**

HANOVER, NEW HAMPSHIRE

OCTOBER 2012

RIVERFRONT MASTER PLAN OBJECTIVES	
1.	NATURALIZE RIVERFRONT AREA FOR ENHANCED ENVIRONMENTAL QUALITY AND AESTHETICS
2.	IMPROVE RIVERFRONT RECREATION AND ATHLETIC USES
3.	TREAT STORMWATER RUNOFF TO CAPTURE OVERLAND FLOW AND LIMIT DIRECT DISCHARGE
4.	UPGRADE STRUCTURES TO IMPROVE CURRENT PROGRAMMING
5.	UPDATE UTILITIES FOR IMPROVED SAFETY AND SERVICE

LEGEND			
	INTERPRETIVE SIGNAGE		SITE FURNISHINGS (PICNIC TABLE, BENCH, & ADIRONDACK CHAIRS)
	GATEWAY SIGNAGE		SITE LIGHTING
	WAYFINDING SIGNAGE		
	STORMWATER FLOW PATHS		

**MILONE & MACBROOM®**  
 1 South Main Street, 2nd Floor  
 Waterbury, Vermont 05676  
 (802) 882-8335 Fax (802) 882-8346  
 www.miloneandmacbroom.com

